

Dimension Tables

HDPE pipes

Dimension Table for S-lon PE pipes in accordance with SLS 1498 (ISO 4427-2007 & EN12201-2011)

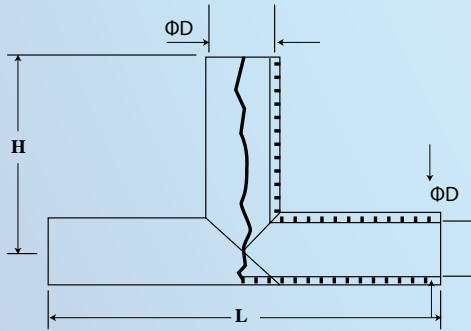
Material : PE 100 Colour : Blue/Black

NOMINAL DIAMETER	OVALITY		THICKNESS in mm																		OVALITY	
	MEAN OD		SDR 7.4 PN 25		SDR 9 PN 20		SDR 11 PN 16		SDR 13.6 PN 12.5		SDR 17 PN 10		SDR 21 PN 8		SDR 26 PN 6		SDR 33 PN 5		SDR 41 PN 4			
	MIN	MAX	MIN	MAX	MIN	MAX	MIN	MAX	MIN	MAX	MIN	MAX	MIN	MAX	MIN	MAX	MIN	MAX	MIN	MAX		
20	20.0	20.3	3.0	3.4	2.3	2.7	2.0	2.3	-	-	-	-	-	-	-	-	-	-	-	-	-	1.2
25	25.0	25.3	3.5	4.0	3.0	3.4	2.3	2.7	2.0	2.3	-	-	-	-	-	-	-	-	-	-	-	1.2
32	32.0	32.3	4.4	5.0	3.6	4.1	3.0	3.4	2.4	2.8	2.0	2.3	-	-	-	-	-	-	-	-	-	1.3
40	40.0	40.3	5.5	6.2	4.5	5.1	3.7	4.2	3.0	3.5	2.4	2.8	2.0	2.3	-	-	-	-	-	-	-	1.4
50	50.0	50.3	6.9	7.7	5.6	6.3	4.6	5.2	3.7	4.2	3.0	3.4	2.4	2.8	2.0	2.3	-	-	-	-	-	1.4
63	63.0	63.3	8.6	9.6	7.1	8.0	5.8	6.5	4.7	5.3	3.8	4.3	3.0	3.4	2.5	2.9	-	-	-	-	-	1.5
75	75.0	75.3	10.3	11.5	8.4	9.4	6.8	7.6	5.6	6.3	4.5	5.1	3.6	4.1	2.9	3.3	-	-	-	-	-	1.6
90	90.0	90.3	12.3	13.7	10.1	11.3	8.2	9.2	6.7	7.5	5.4	6.1	4.3	4.9	3.5	4.0	-	-	-	-	-	1.8
110	110.0	110.3	15.1	16.8	12.3	13.7	10.0	11.1	8.1	9.1	6.6	7.4	5.3	6.0	4.2	4.8	-	-	-	-	-	2.2
125	125.0	125.3	17.1	19.0	14.0	15.6	11.4	12.7	9.2	10.3	7.4	8.3	6.0	6.7	4.8	5.4	-	-	-	-	-	2.5
140	140.0	140.3	19.2	21.3	15.7	17.4	12.7	14.1	10.3	11.5	8.3	9.3	6.7	7.5	5.4	6.1	-	-	-	-	-	2.8
160	160.0	160.3	21.9	24.2	17.9	19.8	14.6	16.2	11.8	13.1	9.5	10.6	7.7	8.6	6.2	7.0	-	-	-	-	-	3.2
180	180.0	180.3	24.6	27.2	20.1	22.3	16.4	18.2	13.3	14.8	10.7	11.9	8.6	9.6	6.9	7.7	-	-	-	-	-	3.6
200	200.0	200.3	27.4	30.3	22.4	24.8	18.2	20.2	14.7	16.3	11.9	13.2	9.6	10.7	7.7	8.6	-	-	-	-	-	4.0
225	225.0	225.3	30.8	34.0	25.2	27.9	20.5	22.7	16.6	18.4	13.4	14.9	10.8	12.0	8.6	9.6	-	-	-	-	-	4.5
250	250.0	250.3	34.2	37.8	27.9	30.8	22.7	25.1	18.4	20.4	14.8	16.4	11.9	13.2	9.6	10.7	-	-	-	-	-	5.0
280	280.0	280.3	38.3	42.3	31.3	34.6	25.4	28.1	20.6	22.8	16.6	18.4	13.4	14.9	10.7	11.9	-	-	-	-	-	9.8
315	315.0	315.3	43.1	47.6	35.2	38.9	28.6	31.6	23.2	25.7	18.7	20.7	15.0	16.6	12.1	13.5	9.7	10.8	7.7	8.6	-	11.1
355	355.0	355.3	48.5	53.5	39.7	43.8	32.2	35.6	26.1	28.9	21.1	23.4	16.9	18.7	13.6	15.1	10.9	12.1	8.7	9.7	-	12.5
400	400.0	402.4	54.7	60.3	44.7	49.3	36.3	40.1	29.4	32.5	23.7	26.2	19.1	21.2	15.3	17.0	12.3	13.7	9.8	10.9	-	14.0
450	450.0	452.7	61.5	67.8	50.3	55.5	40.9	45.1	33.1	36.6	26.7	29.5	21.5	23.8	17.2	19.1	13.8	15.3	11.0	12.2	-	15.6
500	500.0	503.0	-	-	55.8	61.5	45.4	50.1	36.8	40.6	29.7	32.8	23.9	26.4	19.1	21.2	15.3	17.0	12.3	13.7	-	17.5

DIMENSION in mm

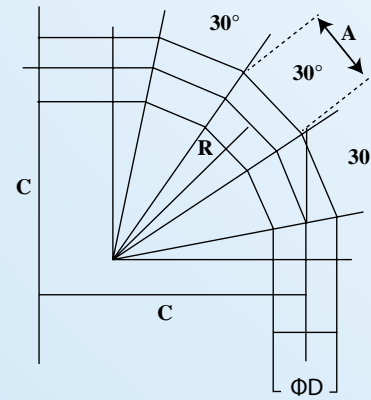
HDPE Fittings Butt Weld Fitting Series

Fabricated (Butt Fused) Tees



NOMINAL SIZE Φ D	H	L
50	150	300
63	150	300
75	400	800
90	400	800
110	400	800
125	400	800
140	400	800
160	400	800
180	450	900
200	450	900
225	450	900
250	450	900
280	650	1300
315	650	1300
355	650	1300
400	650	1300
450	850	1700
500	850	1700

90° Bend-Five segment

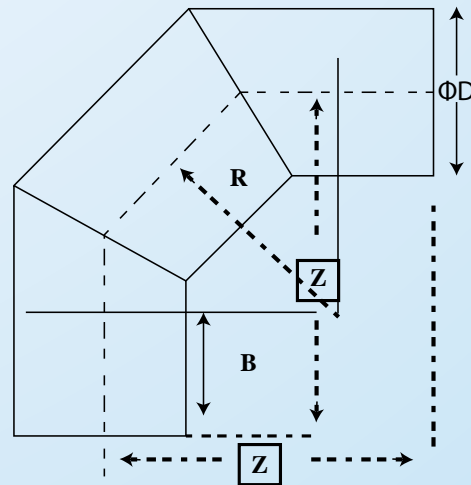


NOMINAL SIZE Φ D	R	A	C
50	75	40	220
63	95	51	280
75	113	61	330
90	135	72	400
110	165	88	370
125	188	101	400
140	210	113	430
160	240	130	470
180	270	145	510
200	300	161	550
225	338	181	600
250	375	201	650
280	420	225	710
315	472	253	620
355	532	285	680
400	600	322	760
450	675	362	1300
500	750	402	1400

DIMENSION in mm

HDPE Fittings **Butt Weld Fitting Series**

Fabricated (Butt Fused) 90° Bend-3 Pieces

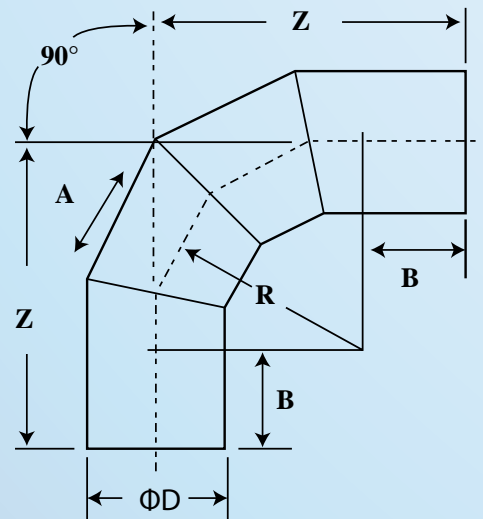


NOMINAL SIZE ΦD	OVERALL LAYING LENGTH Z	RADIUS (MIN) R	TUBULAR LENGTH (MIN) B
20	-	-	-
25	-	-	-
32	-	-	-
40	-	-	-
50	200	75	100
63	226	95	100
75	250	113	100
90	330	135	150
110	370	165	150
125	400	188	150
140	430	210	150
160	470	240	150
180	510	270	150
200	550	300	150
225	600	338	150
250	750	375	250
280	810	420	250
315	930	472	300
355	1010	532	300
400	1100	600	300
450	1300	675	400
500	1400	750	400

DIMENSION in mm

HDPE Fittings **Butt Weld Fitting Series**

Fabricated (Butt Fused) 90° Bend-4 Pieces

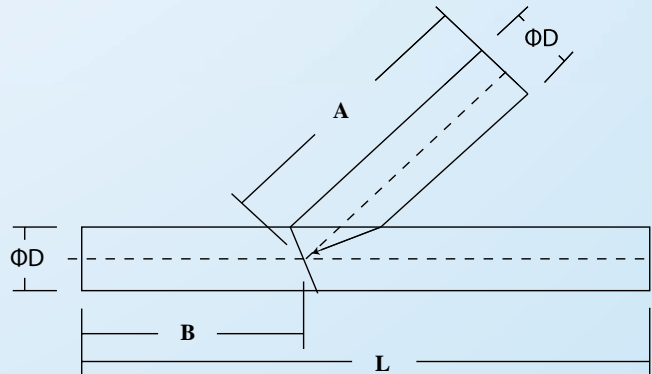


NOMINAL SIZE Φ D	OVERALL LAYING LENGTH Z	RADIUS (MIN) R	A (MIN)	TUBULAR LENGTH (MIN) B
50	200	75	40	100
63	226	95	51	100
75	250	113	61	100
90	330	135	72	150
110	370	165	88	150
125	400	188	101	150
140	430	210	113	150
160	470	240	130	150
180	510	270	145	150
200	550	300	161	150
225	600	338	181	150
250	750	375	201	250
280	810	420	225	250
315	930	472	253	300
355	1010	532	285	300
400	1100	600	322	300
450	1300	675	362	300
500	1400	750	402	350

DIMENSION in mm

HDPE Fittings **Butt Weld Fitting Series**

Fabricated (Butt Fused) 'Y' Joint

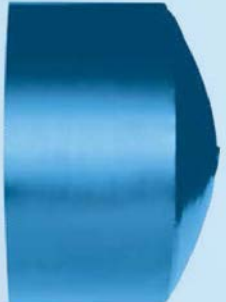
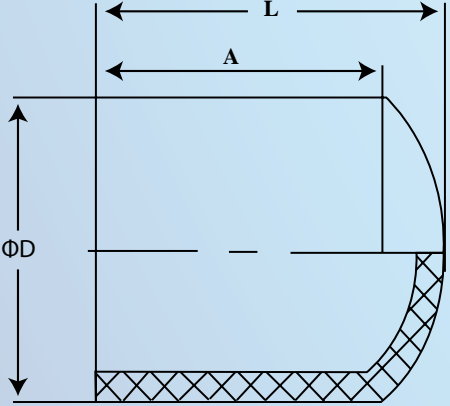


NOMINAL SIZE ΦD	OVERALL LAYING LENGTH L	A (MIN)	B (MIN)
20	-	-	-
25	-	-	-
32	-	-	-
40	-	-	-
50	400	200	150
63	400	200	150
75	950	475	370
90	950	475	370
110	950	475	370
125	950	475	370
140	950	475	370
160	950	475	370
180	1350	875	530
200	1350	875	530
225	1350	875	530
250	1350	875	530
280	1800	900	700
315	1800	900	700
355	1800	900	700
400	1800	900	700
450	2200	1100	870
500	2200	1100	870

DIMENSION in mm

HDPE Fittings Butt Fusion Fitting Series

End Cap

NOMINAL SIZE ØD	L	A
20	45	41
25	46	41
32	51	45
40	87	67
50	90	66
63	77	63
75	84	70
90	92	79
110	97	82
125	112	87
160	119	98
180	145	110
200	147	112
225	155	118
250	186	128
315	190	150
355	215	155
400	220	160
500	240	190


DIMENSION in mm

Butt Fusion Male Adapter



NOMINAL SIZE
20 X 1/2" M
25 X 3/4" M
32 X 1" M
40 X 1 1/4" M
50 X 1 1/2" M
63 X 2" M
90 X 3" M

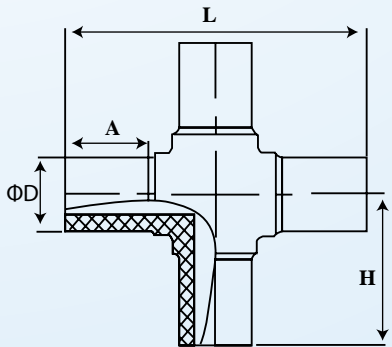
Butt Fusion Female Adapter



NOMINAL SIZE
20 X 1/2" F
25 X 3/4" F
32 X 1" F
40 X 1 1/4" F
50 X 1 1/2" F
63 X 2" F
90 X 3" F

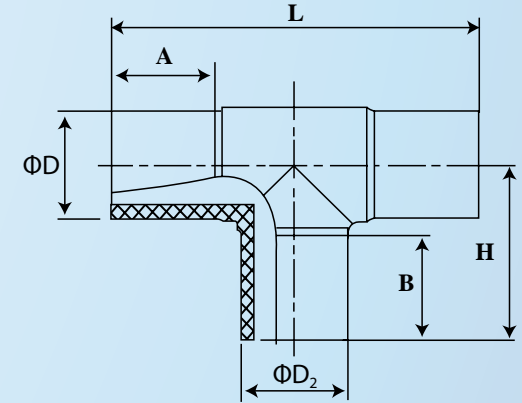
HDPE Fittings Butt Fusion Fitting Series

Cross Fitting



NOMINAL SIZE Φ D	L	A	H
63	230	63	115
90	295	79	147
110	380	82	190
160	430	98	215
200	420	90	210
250	500	110	250
315	615	130	307
355	660	130	330

Equal Tee

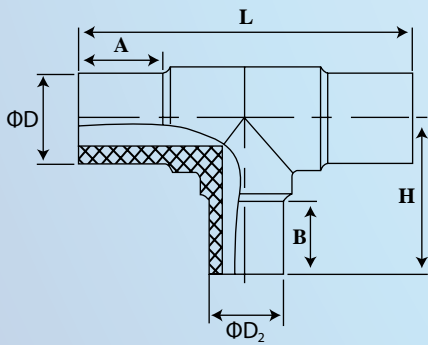


NOMINAL SIZE Φ D1 X Φ D2 X Φ D3	L	A	B	H
50 X 50 X 50	170	55	55	82
63 X 63 X 63	200	63	63	104
75 X 75 X 75	230	70	70	114
90 X 90 X 90	260	79	79	133
110 X 110 X 110	290	82	82	145
125 X 125 X 125	315	87	87	160
140 X 140 X 140	345	92	92	170
160 X 160 X 160	325	75	75	170
180 X 180 X 180	420	105	105	225
200 X 200 X 200	377	75	84	200
225 X 225 X 225	484	120	120	230
250 X 250 X 250	517	120	120	265
280 X 280 X 280	590	140	140	300
315 X 315 X 315	615	130	125	310
355 X 355 X 355	630	120	120	350
400 X 400 X 400	670	120	120	360

DIMENSION in mm

HDPE Fittings Butt Fusion Fitting Series

Reducing Tee



NOMINAL SIZE Φ D1 X Φ D2 X Φ D1	L	A	B	H
50 X 32 X 50	165	55	55	81
63 X 25 X 63	168	63	45	85
63 X 32 X 63	172	63	45	87
63 X 40 X 63	180	63	50	93
63 X 50 X 63	190	63	55	96
75 X 32 X 75	180	70	39	90
75 X 40 X 75	205	70	45	93
75 X 50 X 75	205	70	55	100
75 X 63 X 75	225	70	63	107
90 X 32 X 90	216	79	45	105
90 X 40 X 90	220	79	50	108
90 X 50 X 90	230	79	55	110
90 X 63 X 90	245	79	63	110
90 X 75 X 90	252	79	70	126
110 X 32 X 110	220	82	50	115
110 X 40 X 110	238	82	50	119
110 X 50 X 110	250	82	55	123
110 X 63 X 110	264	82	63	118
110 X 75 X 110	284	82	70	137
110 X 90 X 110	275	82	79	135
125 X 63 X 125	320	87	63	143
125 X 75 X 125	314	87	70	152
125 X 90 X 125	309	87	79	151
125 X 110 X 125	318	87	82	160
140 X 110 X 140	315	92	82	164
140 X 125 X 140	330	92	87	167
160 X 63 X 160	275	98	63	153
160 X 75 X 160	287	98	70	167

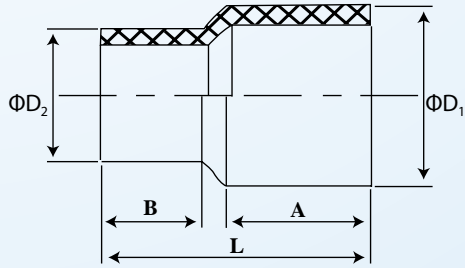
NOMINAL SIZE Φ D1 X Φ D2 X Φ D1	L	A	B	H
160 X 90 X 160	300	98	79	175
160 X 110 X 160	325	98	82	175
160 X 125 X 160	335	98	87	181
160 X 140 X 160	345	98	92	186
180 X 90 X 180	338	105	79	181
180 X 110 X 180	355	105	82	187
180 X 125 X 180	365	105	87	191
180 X 140 X 180	380	105	92	196
180 X 160 X 180	400	105	98	202
200 X 63 X 200	305	112	63	176
200 X 75 X 200	310	112	70	183
200 X 90 X 200	330	112	79	191
200 X 110 X 200	355	112	82	196
200 X 125 X 200	370	112	87	201
200 X 160 X 200	420	112	98	207
225 X 90 X 225	345	120	79	207
225 X 110 X 225	365	120	82	212
225 X 160 X 225	417	120	98	212
225 X 180 X 225	433	95	86	209
250 X 90 X 250	395	129	79	218
250 X 110 X 250	395	129	82	216
250 X 125 X 250	410	129	87	221
250 X 160 X 250	398	95	81	218
250 X 180 X 250	460	129	105	245
250 X 200 X 250	379	75	112	254
280 X 90 X 280	410	140	79	235
280 X 110 X 280	430	140	82	238
280 X 160 X 280	480	140	98	254

NOMINAL SIZE Φ D1 X Φ D2 X Φ D1	L	A	B	H
280 X 200 X 280	520	140	112	268
280 X 225 X 280	545	140	122	278
280 X 250 X 280	570	140	129	285
315 X 90 X 315	420	150	79	255
315 X 110 X 315	442	150	82	255
315 X 160 X 315	450	130	77	247
315 X 180 X 315	503	150	105	291
315 X 200 X 315	455	110	95	285
315 X 225 X 315	550	150	120	292
315 X 250 X 315	460	80	80	248
355 X 250 X 355	620	120	120	290
355 X 315 X 355	620	120	120	290
400 X 200 X 400	670	130	150	380
400 X 315 X 400	670	130	150	380
400 X 355 X 400	670	130	150	380

DIMENSION in mm

HDPE Fittings Butt Fusion Fitting Series

Reducer



NOMINAL SIZE $\Phi D1 \times \Phi D2$	L	A	B
63 X 25	139	63	55
63 X 32	147	63	55
63 X 40	141	63	55
63 X 50	150	63	55
75 X 32	149	70	55
75 X 50	143	70	55
75 X 63	150	70	63
90 X 32	163	79	55
90 X 40	162	79	55
90 X 50	161	79	55
90 X 63	168	79	63
90 X 75	169	79	70
110 X 40	169	82	55
110 X 50	166	82	55
110 X 63	173	82	63
110 X 75	181	82	70
110 X 90	177	82	79
125 X 63	189	87	63
125 X 90	183	87	79
125 X 110	185	87	82
140 X 90	224	92	79
140 X 110	220	92	82
160 X 32	202	98	70
160 X 63	195	98	63
160 X 75	204	98	70
160 X 90	212	98	79
160 X 110	211	98	82
160 X 125	216	98	87

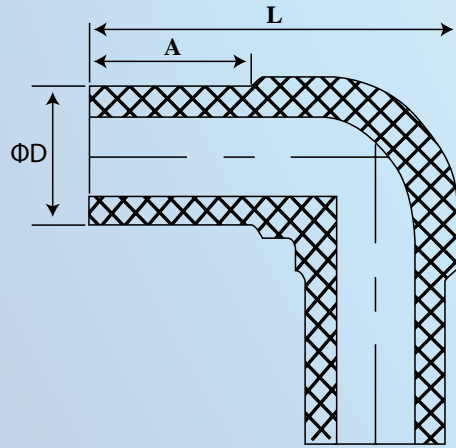
NOMINAL SIZE $\Phi D1 \times \Phi D2$	L	A	B
180 X 90	231	110	79
180 X 110	219	110	82
180 X 125	233	105	87
180 X 160	229	105	87
200 X 63	210	112	63
200 X 90	220	108	79
200 X 110	228	112	82
200 X 125	220	112	90
200 X 160	226	112	85
200 X 180	245	112	105
225 X 90	226	105	79
225 X 110	245	105	82
225 X 160	249	105	90
225 X 180	249	105	90
225 X 200	246	105	90
250 X 90	224	112	79
250 X 110	221	108	82
250 X 125	234	109	87
250 X 160	244	110	98
250 X 180	237	110	105
250 X 200	250	110	103
250 X 225	231	105	90
280 X 160	257	107	85
280 X 225	247	110	85
280 X 250	247	110	90
315 X 90	240	115	79
315 X 110	241	115	82
315 X 160	254	115	98

NOMINAL SIZE $\Phi D1 \times \Phi D2$	L	A	B
315 X 180	253	115	100
315 X 200	253	115	92
315 X 225	245	115	90
315 X 250	246	115	90
355 X 200	270	100	100
355 X 250	270	100	100
355 X 280	260	100	100
355 X 315	240	100	100
400 X 200	260	100	100
400 X 250	250	100	100
400 X 315	250	100	100
400 X 355	250	100	100
450 X 200	260	100	100
450 X 250	260	100	100
450 X 315	250	100	100
450 X 355	250	100	100
450 X 400	240	100	100
500 X 400	250	100	100
500 X 450	250	100	100

DIMENSION in mm

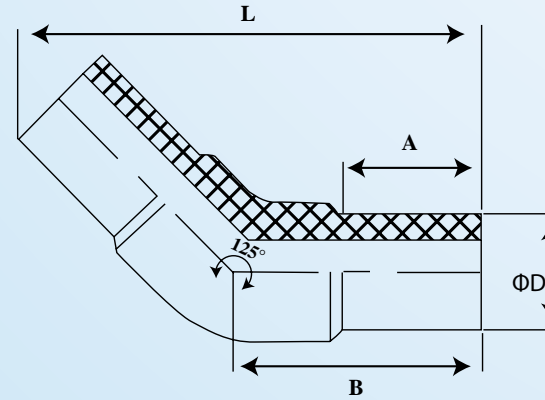
HDPE Fittings Butt Fusion Fitting Series

Elbow 90°



NOMINAL SIZE $\Phi D \times 90^\circ$	R (MM)	A
50 X 90°	120	55
63 X 90°	133	63
75 X 90°	163	70
90 X 90°	182	79
110 X 90°	214	82
125 X 90°	240	87
140 X 90°	244	88
160 X 90°	258	80
180 X 90°	297	97
200 X 90°	308	97
225 X 90°	367	115
250 X 90°	362	100
280 X 90°	433	130
315 X 90°	460	125
355 X 90°	540	150
400 X 90°	600	180

Elbow 45°



NOMINAL SIZE $\Phi D \times 45^\circ$	L	A	B
63 X 45°	160	63	79
75 X 45°	180	70	89
90 X 45°	228	79	114
110 X 45°	246	82	118
125 X 45°	248	87	115
160 X 45°	310	98	138
180 X 45°	340	100	159
200 X 45°	355	112	167
225 X 45°	398	120	173
250 X 45°	420	129	192
315 X 45°	510	150	220

DIMENSION in mm

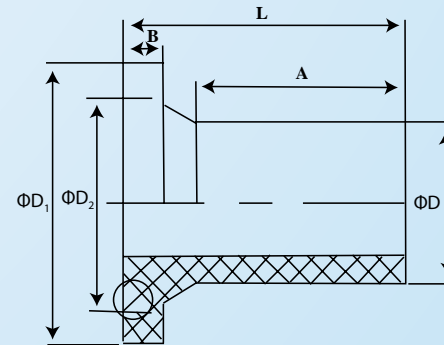
HDPE Fittings Butt Fusion Fitting Series

Stepped Reducer



NOMINAL SIZE
180/160/125/110/90
315/250/200/180/160
400/355/315/250/200/180

Flange Adapter (Stub End)



NOMINAL SIZE ΦD	ΦD_1	L	A	B
20	44	83	62	7
25	44	83	61	8
32	67	83	62	10
40	77	78	61	12
50	87	88	71	12
63	101	88	70	12
75	121	94	75	13
90	137	98	76	18
110	158	106	81	18
125	158	130	103	21
140	187	128	99	22
160	212	135	104	26
180	212	137	101	29
200	268	154	113	34
225	267	144	108	29
250	320	156	120	29
280	323	168	128	35
315	370	173	133	33
355	432	173	132	33
400	482	182	132	32
450	525	185	129	47
500	580	211	144	47

DIMENSION in mm

HDPE Fittings [Socket Joint Fitting Series](#)

Equal Coupling



NOMINAL SIZE
20
25
32
40
50
63
75

Reducing Coupling

NOMINAL SIZE	NOMINAL SIZE
25 X 20	63 X 20
32 X 20	63 X 25
32 X 25	63 X 32
40 X 20	63 X 40
40 X 25	63 X 50
40 X 32	75 X 32
50 X 20	75 X 40
50 X 25	75 X 50
50 X 32	75 X 63
50 X 40	

Equal Tee



NOMINAL SIZE
20
25
32
40
50
63
75

Reducing Tee



NOMINAL SIZE	NOMINAL SIZE
25 X 20	50 X 40
32 X 20	63 X 20
32 X 25	63 X 25
40 X 20	63 X 32
40 X 25	63 X 40
40 X 32	63 X 50
50 X 20	75 X 40
50 X 25	75 X 50
50 X 32	75 X 63

HDPE Fittings Socket Joint Fitting Series

90° Equal Elbow



NOMINAL SIZE
20
25
32
40
50
63
75

45° Equal Elbow



NOMINAL SIZE
20
25
32
40
50
63
75

Socket Washer



NOMINAL SIZE
40
50
63

End Cap



NOMINAL SIZE
20
25
32
40
50
63
75

Female Adapter



NOMINAL SIZE
20 X 1/2" F
25 X 1/2" F
25 X 3/4" F
32 X 1" F
32 X 1/2" F
32 X 3/4" F
40 X 1 1/4" F
50 X 1 1/2" F
63 X 2" F

Male Adapter



NOMINAL SIZE
20 X 1/2" M
25 X 1/2" M
25 X 3/4" M
32 X 1" M
32 X 1/2" M
32 X 3/4" M
40 X 1 1/4" M
50 X 1 1/2" M
63 X 2" M

Female Tee



NOMINAL SIZE
20 X 1/2" F
25 X 1/2" F
25 X 3/4" F
32 X 1" F
32 X 1/2" F
32 X 3/4" F

Male Tee



NOMINAL SIZE
20 X 1/2" M
25 X 1/2" M
25 X 3/4" M
32 X 1" M
32 X 1/2" M
32 X 3/4" M

Female Elbow



NOMINAL SIZE
20 X 1/2" F
25 X 1/2" F
25 X 3/4" F
32 X 1" F
32 X 1/2" F
32 X 3/4" F

HDPE Fittings **Socket Joint Fitting Series**

Male Elbow



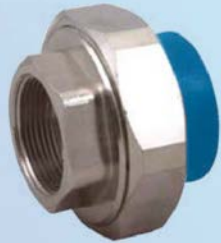
NOMINAL SIZE
20 X 1/2" M
25 X 1/2" M
25 X 3/4" M
32 X 1" M
32 X 1/2" M
32 X 3/4" M

Stop Valve



NOMINAL SIZE
20
25
32
40
50
63
75

Female Union



NOMINAL SIZE
20 X 1/2" F
25 X 3/4" F
32 X 1" F
40 X 1 1/4" F
50 X 1 1/2" F
63 X 2" F

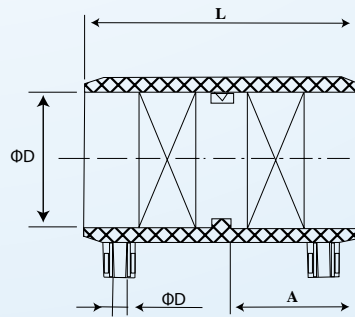
Male Union



NOMINAL SIZE
20 X 1/2" M
25 X 3/4" M
32 X 1" M
40 X 1 1/4" M
50 X 1 1/2" M
63 X 2" M

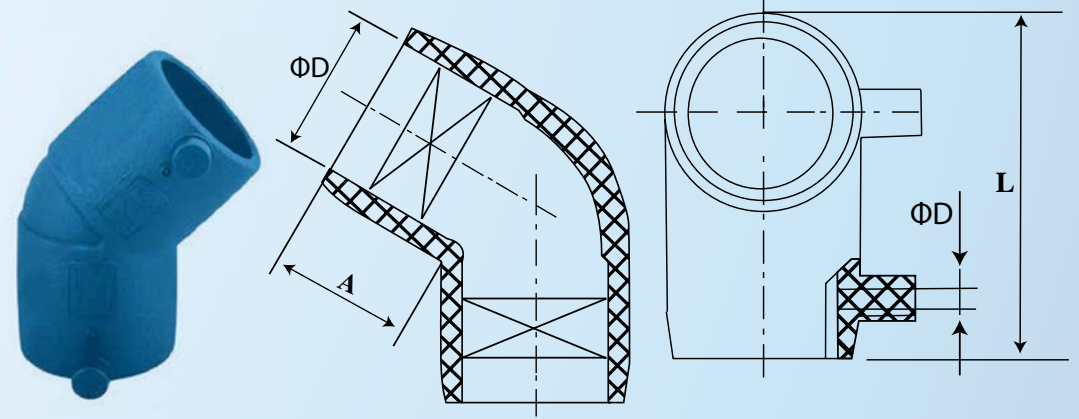
HDPE Fittings **Electrofusion Fitting Series**

Electrofusion Coupler



NOMINAL SIZE Φ D	L	A	Φ d
20	85	40	4.7
25	90	43	4.7
32	90	44	4.7
40	95	45	4.7
50	105	50	4.7
63	110	50	4.7
75	135	65	4.7
90	130	63	4.7
110	150	70	4.7
125	165	80	4.7
140	170	80	4.7
160	180	85	4.7
180	210	100	4.7
200	205	100	4.7
225	220	105	4.7
250	215	105	4.7
315	225	110	4.7
355	265	130	4.7
400	310	150	4.7
500	370	180	4.7

Electrofusion Elbow 45°

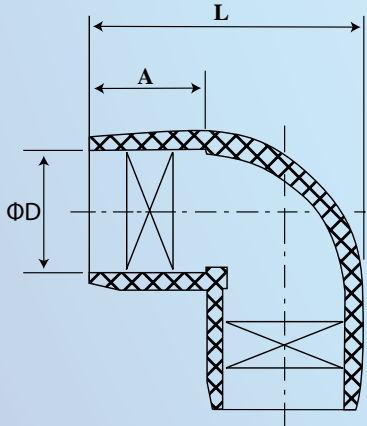


NOMINAL SIZE Φ D	L	A	Φ d
50 X 45°	130	50	4.7
63 X 45°	180	63	4.7
90 X 45°	230	83	4.7
110 X 45°	270	90	4.7
160 X 45°	280	85	4.7
200 X 45°	330	100	4.7
250 X 45°	420	115	4.7
315 X 45°	470	130	4.7
400 X 45°	580	140	4.7

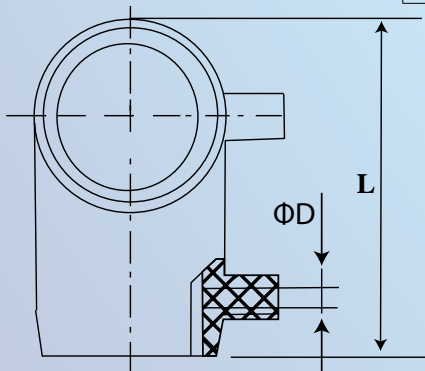
DIMENSION in mm

HDPE Fittings **Electrofusion Fitting Series**

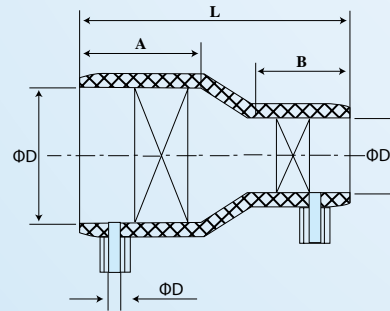
Electrofusion Elbow 90°



NOMINAL SIZE Φ D	L	A	Φ d
25 X 90°	85	45	4.7
32 X 90°	95	45	4.7
40 X 90°	95	50	4.7
50 X 90°	110	50	4.7
63 X 90°	130	55	4.7
75 X 90°	155	60	4.7
90 X 90°	170	65	4.7
110 X 90°	195	70	4.7
125 X 90°	225	80	4.7
160 X 90°	265	80	4.7
180 X 90°	295	85	4.7
200 X 90°	330	102	4.7
250 X 90°	395	113	4.7
315 X 90°	485	129	4.7
400 X 90°	590	140	4.7



Electrofusion Reducer

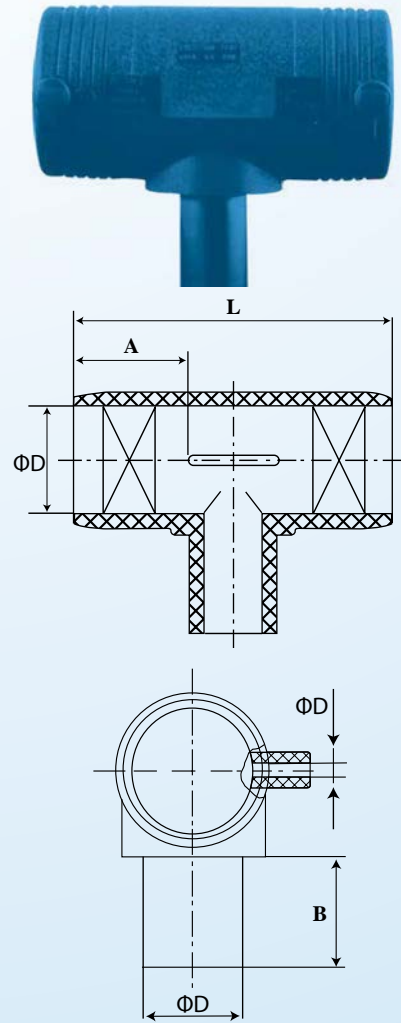


NOMINAL SIZE Φ D	L	A	B	Φ d
25 X 20	95	45	35	4.7
32 X 20	95	45	45	4.7
32 X 25	95	40	45	4.7
40 X 25	100	50	40	4.7
40 X 32	100	50	40	4.7
50 X 25	110	55	40	4.7
50 X 32	110	55	40	4.7
50 X 40	110	50	50	4.7
63 X 25	115	60	40	4.7
63 X 32	120	60	40	4.7
63 X 40	120	55	40	4.7
63 X 50	120	55	50	4.7
75 X 50	120	65	50	4.7
75 X 63	130	65	50	4.7
90 X 50	140	65	55	4.7
90 X 63	140	65	55	4.7
90 X 75	145	65	60	4.7
110 X 63	160	75	55	4.7
110 X 75	155	75	60	4.7
110 X 90	155	75	65	4.7
125 X 63	160	80	60	4.7
125 X 90	160	80	70	4.7
125 X 110	165	85	69	4.7
160 X 90	195	94	74	4.7
160 X 110	165	95	75	4.7
160 X 125	195	95	75	4.7
200 X 110	210	95	80	4.7
200 X 160	210	95	85	4.7
250 X 110	230	100	80	4.7
250 X 160	230	110	90	4.7
250 X 200	230	110	100	4.7
315 X 200	240	100	100	4.7
315 X 250	240	100	100	4.7
400 X 250	260	110	105	4.7
400 X 315	260	110	105	4.7

DIMENSION in mm

HDPE Fittings **Electrofusion Fitting Series**

Electrofusion Reducing Tee



NOMINAL SIZE Ø D	L	A	B	Ø d
25 X 20 X 25	105	45	50	4.7
32 X 20 X 32	120	45	50	4.7
32 X 25 X 32	120	45	50	4.7
40 X 25 X 40	125	45	55	4.7
40 X 32 X 40	125	45	55	4.7
50 X 25 X 50	145	50	50	4.7
50 X 32 X 50	144	50	55	4.7
50 X 40 X 50	145	55	55	4.7
63 X 25 X 63	130	55	55	4.7
63 X 32 X 63	136	50	55	4.7
63 X 40 X 63	143	50	55	4.7
63 X 50 X 63	164	55	55	4.7
75 X 32 X 75	195	70	70	4.7
75 X 40 X 75	195	70	70	4.7
75 X 50 X 75	195	70	70	4.7
75 X 63 X 75	195	70	65	4.7
90 X 32 X 90	210	70	80	4.7
90 X 40 X 90	210	70	80	4.7
90 X 50 X 90	210	70	80	4.7
90 X 63 X 90	210	70	80	4.7
90 X 75 X 90	210	70	75	4.7
110 X 32 X 110	240	75	80	4.7
110 X 40 X 110	240	75	80	4.7
110 X 50 X 110	240	75	80	4.7
110 X 63 X 110	240	75	80	4.7
110 X 75 X 110	240	75	80	4.7
110 X 90 X 110	240	75	80	4.7
125 X 90 X 125	255	80	85	4.7
125 X 110 X 125	255	80	85	4.7
160 X 63 X 160	305	90	90	4.7
160 X 75 X 160	305	90	90	4.7
160 X 90 X 160	305	90	90	4.7

SPECIFICATIONS Ø D	L	A	B	Ø d
160 X 110 X 160	305	90	90	4.7
160 X 125 X 160	305	90	80	4.7
200 X 90 X 200	355	100	75	4.7
200 X 110 X 200	355	100	75	4.7
200 X 160 X 200	355	100	90	4.7
250 X 110 X 150	405	100	95	4.7
250 X 160 X 150	405	100	110	4.7
250 X 200 X 150	405	100	110	4.7
315 X 110 X 315	520	125	95	4.7
315 X 160 X 315	520	125	95	4.7
315 X 200 X 315	520	125	110	4.7
315 X 250 X 315	520	125	110	4.7
400 X 110 X 400	600	125	115	4.7
400 X 160 X 400	600	125	115	4.7
400 X 200 X 400	600	125	115	4.7
400 X 250 X 400	600	125	115	4.7
400 X 315 X 400	600	125	115	4.7

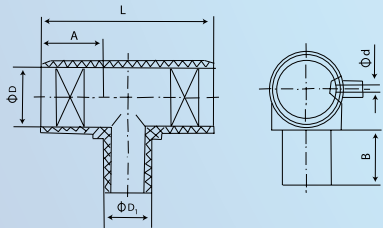
DIMENSION in mm

HDPE Fittings **Electrofusion Fitting Series**

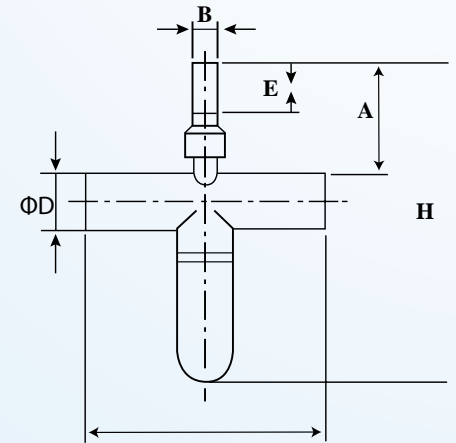
Electrofusion Equal Tee



NOMINAL SIZE ΦD	L	A	B	Φd
20 X 20 X 20	100	40	50	4.7
25 X 25 X 25	105	45	50	4.7
32 X 32 X 32	120	45	55	4.7
40 X 40 X 40	125	45	60	4.7
50 X 50 X 50	145	55	60	4.7
63 X 63 X 63	165	55	60	4.7
75 X 75 X 75	195	70	70	4.7
90 X 90 X 90	210	65	75	4.7
110 X 110 X 110	240	75	80	4.7
125 X 125 X 125	255	80	85	4.7
160 X 160 X 160	310	90	95	4.7
180 X 180 X 180	340	100	95	4.7
200 X 200 X 200	360	100	105	4.7
250 X 250 X 250	410	100	115	4.7
315 X 315 X 315	520	125	115	4.7
400 X 400 X 400	600	125	115	4.7



Syphon Pot

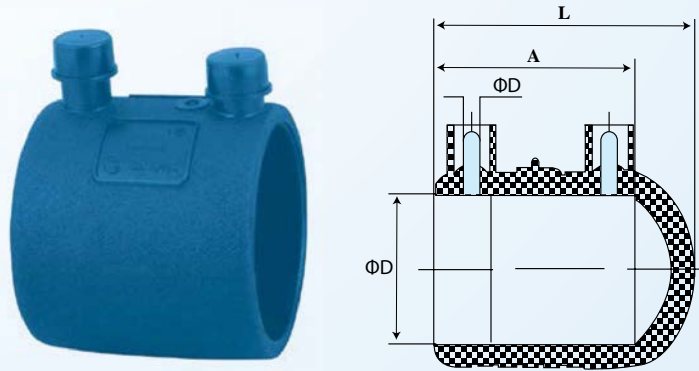


NOMINAL SIZE ΦD	L	A	B	E	H
63	230	230	32	95	600
90	280	230	32	95	700
110	380	230	32	95	770
160	430	230	32	95	770
200	420	230	32	95	700
250	520	230	32	95	780
315	620	230	32	95	890

DIMENSION in mm

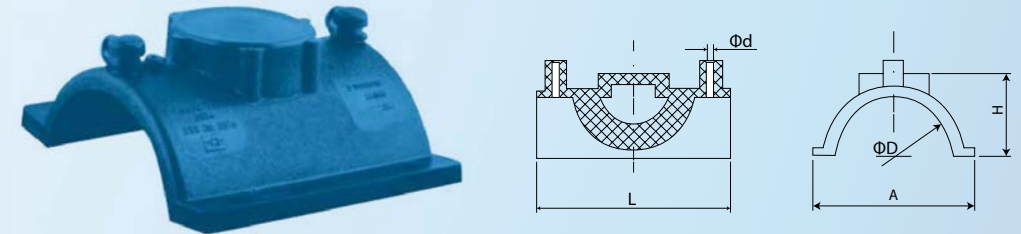
HDPE Fittings [Electrofusion Fitting Series](#)

Electrofusion End cap



NOMINAL SIZE Φ D	L	A	Φ d
32	60	45	4.7
40	70	55	4.7
50	70	55	4.7
63	80	55	4.7
90	95	55	4.7
110	110	70	4.7

Electrofusion Repair Saddle

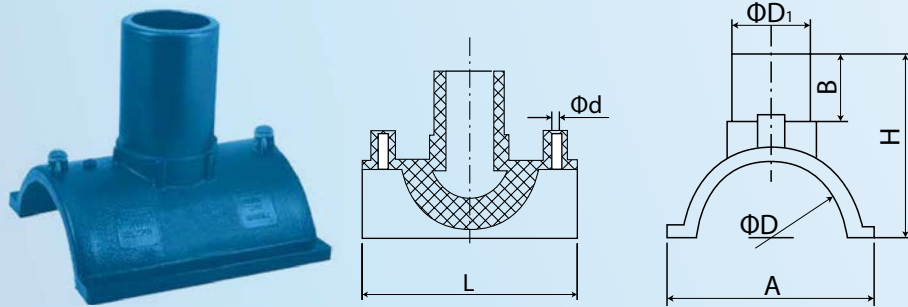


NOMINAL SIZE Φ D	L	A	H	Φ d
90	145	154	68	4.7
110	145	160	60	4.7
160	190	230	78	4.7
200	190	235	90	4.7
250	190	300	65	4.7
315	190	300	75	4.7

DIMENSION in mm

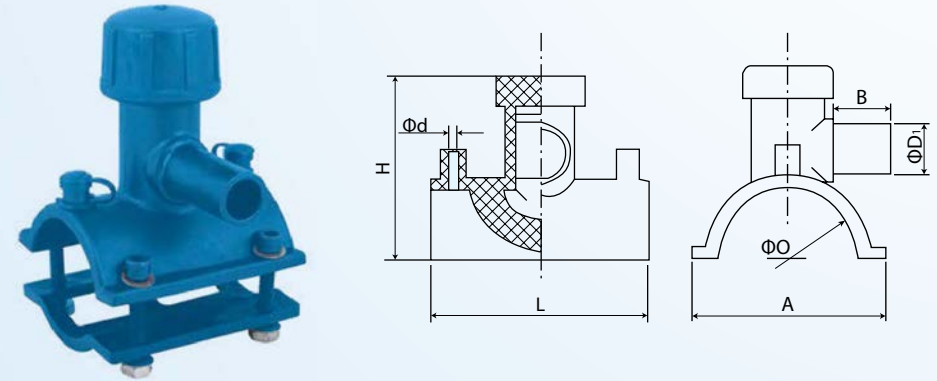
HDPE Fittings **Electrofusion Fitting Series**

Electrofusion Branch Saddle



NOMINAL SIZE Φ D X Φ D1	L	A	B	H	Φ D
90 X 63	145	155	80	145	4.7
110 X 63	145	160	80	145	4.7
160 X 63	190	230	100	185	4.7
160 X 90	190	230	100	185	4.7
200 X 63	190	235	110	185	4.7
200 X 90	190	235	115	195	4.7
250 X 63	190	300	115	195	4.7
250 X 90	190	300	115	195	4.7
315 X 63	190	300	115	195	4.7
315 X 90	190	300	120	200	4.7

Electrofusion Tapping Saddle

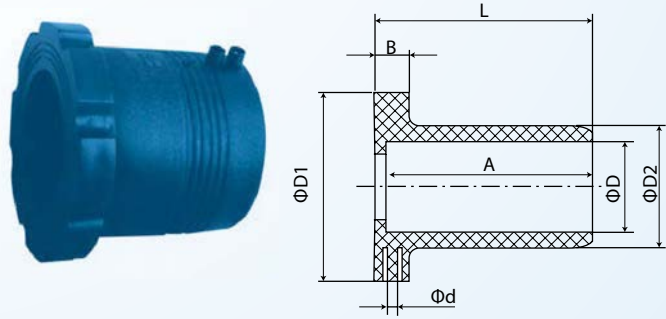


NOMINAL SIZE Φ D X Φ D1	L	A	B	H	Φ D
90 X 63	140	130	75	185	4.7
110 X 20	130	155	55	145	4.7
110 X 25	130	155	55	145	4.7
110 X 32	130	155	55	145	4.7
110 X 63	145	160	75	175	4.7
160 X 63	190	240	85	225	4.7
160 X 90	190	240	160	225	4.7
200 X 63	190	255	85	215	4.7
200 X 90	190	255	160	215	4.7
250 X 63	190	265	85	215	4.7
250 X 90	190	265	160	215	4.7
315 X 63	190	310	85	240	4.7
315 X 90	190	310	160	240	4.7

DIMENSION in mm

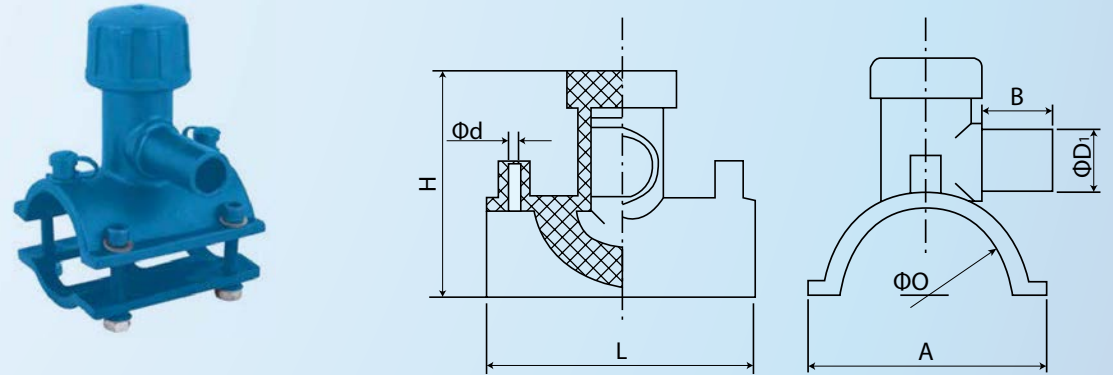
HDPE Fittings **Electrofusion Fitting Series**

Electrofusion Flange Adapter



NOMINAL SIZE ΦD	$\Phi D1$	$\Phi D2$	B	H	B	H	ΦD
50	89	66	116	110	17	4.7	4.7
63	102	81	120	115	18	4.7	4.7
75	121	96	130	125	20	4.7	4.7
90	139	111	145	140	23	4.7	4.7
110	174	144	150	145	25	4.7	4.7
160	229	193	160	152	28	4.7	4.7
200	289	235	179	174	30	4.7	4.7
250	340	285	135	128	32	4.7	4.7
315	395	350	138	130	33	4.7	4.7
400	510	430	160	153	33	4.7	4.7

Electrofusion Tapping Saddle



NOMINAL SIZE		PE $\Phi D1$	STEEL $\Phi D2$	L	A	B	Inch	Plastic path
Nominal	Commonly known as							
25 X 3/4"	25 P	25	27	375	80	230	3/4"	20
32 X 3/4"	32 P	32	27	375	80	230	3/4"	20
32 X 1"	32 P	32	34	375	80	230	1"	25
40 X 1"	40 P	40	34	375	80	230	1"	25
40 X 1 1/4"	40 P	40	42	375	80	230	1 1/4"	32
50 X 1 1/2"	50 P	50	48	375	80	230	1 1/2"	40
63 X 1 1/2"	63 P	63	48	375	80	230	1 1/2"	40
63 X 2"	63 P	53	57	375	80	230	2"	50
63 X 2"	63 P	63	60	375	80	230	2"	50
75 X 2 1/2"	75 P	75	76	570	80	370	2 1/2"	63
90 X 2 1/2"	90 P	90	76	570	100	370	2 1/2"	63
90 X 3"	90 P	90	89	570	100	370	3"	80
110 X 3"	110 P	110	89	570	100	370	3"	80
110 X 4"	110 P	110	108	570	100	370	4"	100
160 X 6"	160 P	160	159	560	160	310	6"	150
200	200 P	200	203	580	150	330	-	-
200	200 P	200	219	580	150	330	-	-

Electrofusion Syphon Coupler

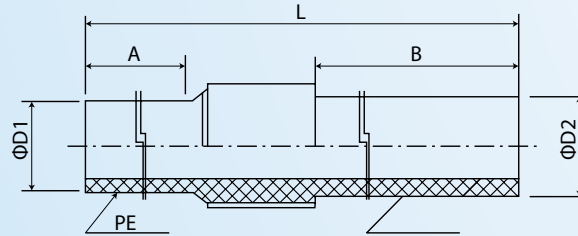
NOMINAL SIZE							
50	56	110	125	160	200	250	315



DIMENSION in mm

HDPE Fittings PE /Metal Transition Fitting Series

PE / Steel Transition Pipe

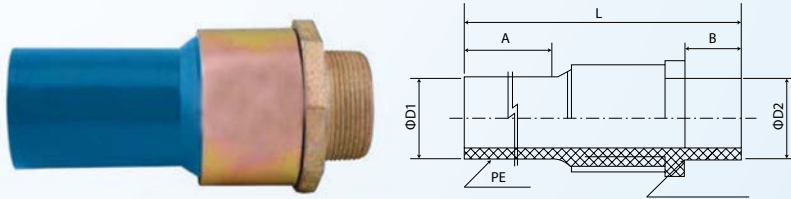


SIZE		PE Φ D1	STEEL Φ D2	L	A	B	Inch	Plastic path
Nominal	Commonly known as							
25 X 3/4"	25 P	25	27	375	80	230	3/4"	20
32 X 3/4"	32 P	32	27	375	80	230	3/4"	20
32 X 1"	32 P	32	34	375	80	230	1"	25
40 X 1"	40 P	40	34	375	80	230	1"	25
40 X 1 1/4"	40 P	40	42	375	80	230	1 1/4"	32
50 X 1 1/2"	50 P	50	48	375	80	230	1 1/2"	40
63 X 1 1/2"	63 P	63	48	375	80	230	1 1/2"	40
63 X 2"	63 P	53	57	375	80	230	2"	50
63 X 2"	63 P	63	60	375	80	230	2"	50
75 X 2 1/2"	75 P	75	76	570	80	370	2 1/2"	63
90 X 2 1/2"	90 P	90	76	570	100	370	2 1/2"	63
90 X 3"	90 P	90	89	570	100	370	3"	80
110 X 3"	110 P	110	89	570	100	370	3"	80
110 X 4"	110 P	110	108	570	100	370	4"	100
160 X 6"	160 P	160	159	560	160	310	6"	150
200	200 P	200	203	580	150	330	-	-
200	200 P	200	219	580	150	330	-	-
250	250 P	250	245	650	180	360	-	-
250	250 P	250	273	650	180	360	-	-
315	315 P	315	299	650	210	350	-	-
315	315 P	315	325	650	190	460	-	-

DIMENSION in mm

HDPE Fittings PE /Metal Transition Fitting Series

PE / Steel Transition Threaded



SIZE		PE Φ D1	TUBE TEETH Φ D2	L	A	B	Inch
Nominal	Commonly known as						
32X1"	32 T	32	1 INCH	170	80	25	1"
40X1¼"	40 T	40	11 TEETH	170	80	25	1¼"
50X1½"	50 T	50		170	80	25	1½"
63X2"	63 T	63		170	80	25	2"

PE / Steel Transition Pipe Elbow



SIZE		PE Φ D1	PIPE Φ D2	A	B	C	Inch	Plastic path
Nominal	Commonly known as							
25X¾"	25 P	25	27	740	410	80	¾"	20
32X1"	32 P	32	34	740	410	80	1"	25
40X1"	40 P	40	34	740	410	80	1"	25
40X1¼"	40 P	40	42	740	410	80	1¼"	32
50X1½"	50 P	50	48	740	410	80	1½"	40
63X1½"	63 P	63	48	740	430	80	1½"	40
63X2"	63 P	63	57	740	430	80	2"	50
63X2"	63 P	63	60	740	430	80	2"	53

DIMENSION in mm

PE / Steel transition Threaded



SIZE	
Nominal	Commonly known as
25 X ¾"	25 P
32 X ¾"	32 P
32 X 1"	32 P
40 X 1"	40 P
40 X 1½"	40 P
50 X 1½"	50 P
63 X 1½"	63 P
63 X 2"	63 P



PE/Steel Trans Female Elbow 90°



PE/Steel Trans Female Elbow 45°



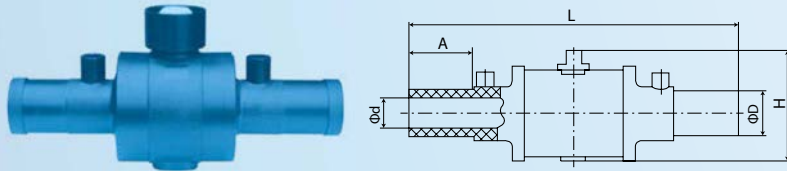
PE/Steel Trans Male Elbow 90°



PE/Steel Trans Male Elbow 45°

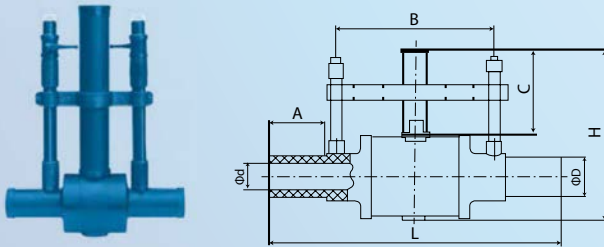
HDPE Fittings PE /Metal Transition Fitting Series

PE Ball Valves



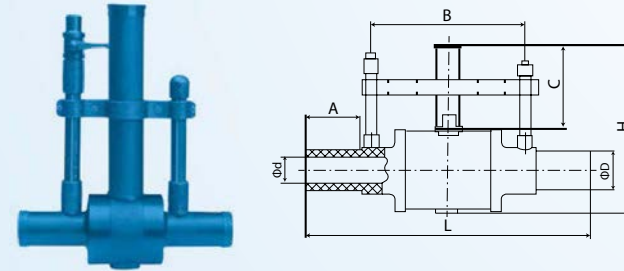
NOMINAL SIZE Φ D X Φ D1	L	A	H	Φ D
50	495	90	200	41
63	505	100	200	49
90	660	110	325	70
110	660	115	325	87
160	770	115	420	126
200	785	125	430	158
250	980	140	585	204
315	985	140	585	250

Two-Purge Ball Valve



NOMINAL SIZE Φ D X Φ D1	L	A	B	C	H	Φ D
90	660	110	330	590	835	70
110	680	115	330	590	830	87
160	760	115	415	590	800	126
200	780	125	435	600	935	158
250	980	140	585	700	1210	204
315	985	140	585	700	1245	250

One-Purge Ball Valve

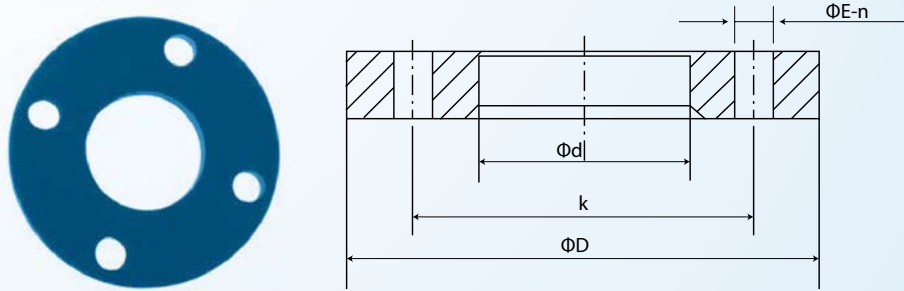


NOMINAL SIZE Φ D X Φ D1	L	A	B	C	H	Φ D
90	660	110	330	590	835	70
110	680	115	330	590	830	87
160	760	115	415	590	800	126
200	780	125	435	600	935	158
250	980	140	585	700	1210	204
315	985	140	585	700	1245	250

DIMENSION in mm

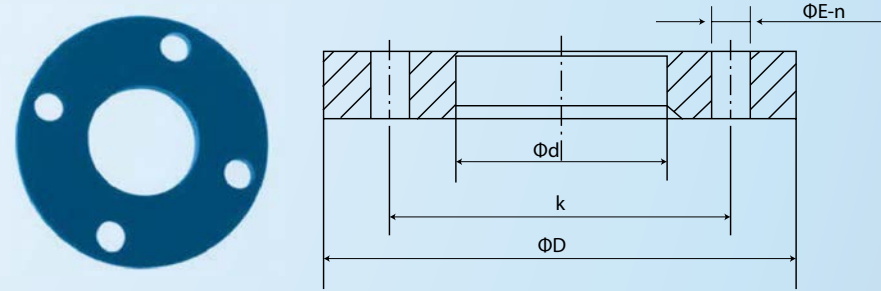
HDPE Fittings Flange Connections for HDPE Pipes

Nylon Coated Flange Plate (PN 1.0 MPa)



NOMINAL SIZE		ΦD	Φd	K	ΦE	n	Bolt
In PE	Commonly known as						
40	32	130	47	100	18	4	M16
50	40	140	57	110	18	4	
63	50	155	70	125	18	4	
75	65	177	82	145	18	4	
90	80	190	97	160	18	8	
110	100	212	117	180	18	8	
125	100	212	132	180	18	8	
140	125	240	147	210	18	8	
160	150	277	167	240	22	8	M20
180	150	277	187	240	22	8	
200	200	330	207	295	22	8	
225	200	330	232	295	22	8	
250	250	385	257	350	22	12	
280	250	385	287	350	22	12	
315	300	440	325	400	22	12	
355	350	500	365	460	22	16	
400	400	560	410	515	26	16	
450	450	610	460	565	26	20	M 24
500	500	665	510	620	26	20	

Nylon Coated Flange Plate (PN 1.6 MPa)



SIZE		PE $\Phi D1$	K	ΦE	n
Nominal	Commonly known as				
40	32	130	100	18	4
50	40	140	110	18	4
63	50	155	125	18	4
75	65	177	145	18	4
90	80	190	160	18	8
110	100	212	180	18	8
125	100	212	180	18	8
140	125	240	210	18	8
160	150	277	240	22	8
180	150	277	240	22	8
200	200	330	295	22	8
225	200	330	295	22	8
250	250	400	355	26	12
280	250	400	355	26	12
315	300	445	410	26	12
355	350	505	470	26	16
400	400	565	525	30	16
450	450	625	585	30	20
500	500	700	650	34	20

DIMENSION in mm